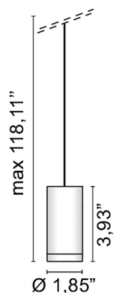


Newton System

Design U.T. EGOLUCE



Codice	U1591
Descrizione	Sistema di lampade a sospensione con corpo in alluminio, COB LED a luce diretta e puntuale
Anno di produzione	2019
Tipologia	sospensione, sistema,
Materiale	alluminio
Emissione Luce	<i>diretta</i>
Grado IP	IP20
Allimentazione	350mA - 17Vdc
Finiture	.02 Nero .25 Dorato satinato .32 Nickel satinato
Sorgente luminosa	/W 5,9W 1060lm 17V 4000K CRI>90 /WW 5,9W 1030lm 17V 3000K CRI>90 /XW 5,9W 969lm 17V 2700k CRI>90
Peso netto	1,10 lb
	118,11 inch



ELEMENTI DI SISTEMA

Newton System

Design U.T. EGOLUCE



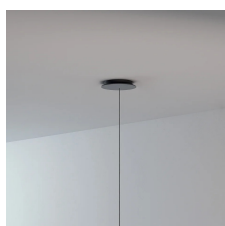
Plasterboard rosette without cable with ballast - 1 lamp

U0970

0,44 lb

.01  Bianco

.02  Nero



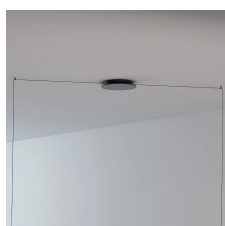
Round rosette diameter 20 cm complete with ballast - 1 Lamp

U0557/1

0,00 lb

.01  Bianco

.02  Nero



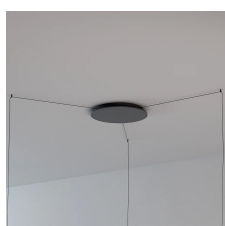
Round rosette diameter 20 cm complete with ballast - 2 Lamps

U0557/2

1,10 lb

.01  Bianco

.02  Nero



Round rosette diameter 38 cm complete with ballast - 3 Lamps

U0557/3

3,75 lb

.01  Bianco

.02  Nero



Round rosette diameter 38 cm complete with ballast - 4-6 Lamps

U0557/6

3,97 lb

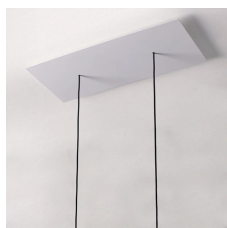
.01  Bianco

.02  Nero



Newton System

Design U.T. EGOLUCE



Rectangular rosette 48x24x3 cm complete with ballast - 2 Lamps

U0979/2

4,41 lb

.01 Bianco

.02 Nero



Round rosette diameter 35 cm complete with ballast - 3 Lamps

U0980/3

2,65 lb

.01 Bianco

.02 Nero



Round rosette diameter 45 cm complete with ballast - 5 Lamps

U0980/5

5,29 lb

.01 Bianco

.02 Nero



ACCESSORI



0547

0,57 lb

.02 Nero



0549

0,22 lb

.02 Nero

.25 Dorato satinato

.32 Nickel satinato

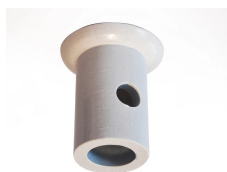
.02 Nero

.25 Dorato satinato

.32 Nickel satinato

Newton System

Design U.T. EGOLUCE



Deviatore decentratore

0612

0,07 lb

.02 ■ Nero

.01 ■ Bianco

