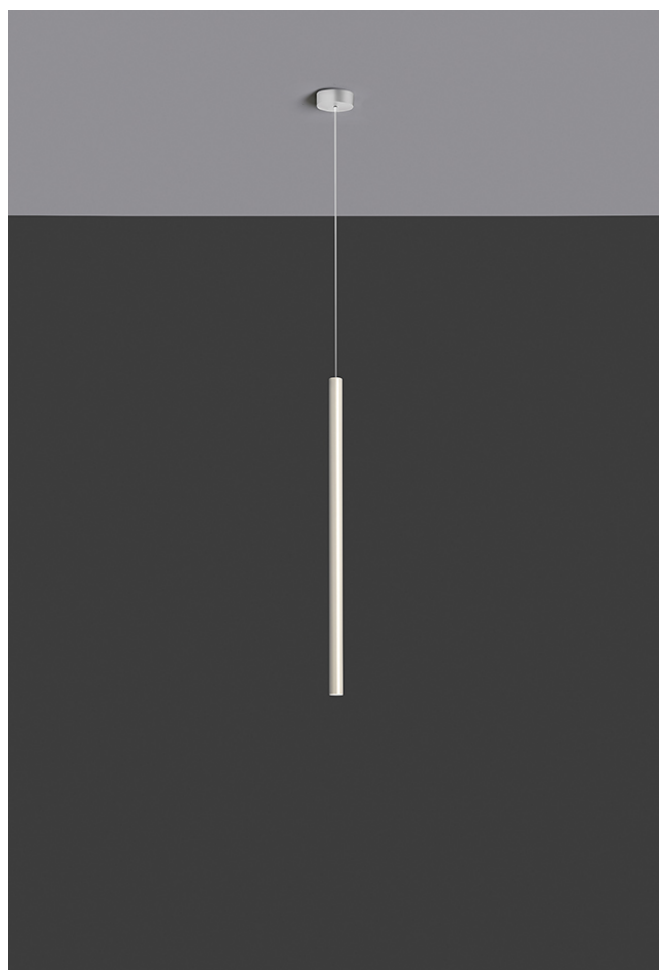


Stick system

Design ABS Studio



Codice

U1580

Descrizione

Sistema a sospensione caratterizzata da un'alta efficienza luminosa diretta e puntuale con corpo in ottone, dissipatore interno in alluminio, apertura ottica di 48 gradi e cavo di alimentazione

Anno di produzione

2020

Tipologia

sospensione

Materiale

alluminio

Emissione Luce

diretta

Grado IP

20

Allimentazione

350mA - 17Vdc

Finiture

.01  Bianco

.02  Nero

.21  Dorato lucido

.25  Dorato satinato

Sorgente luminosa

/W 5,9W 1060lm 17V 4000K CRI>90

/WW 5,9W 1030lm 17V 3000K CRI>90

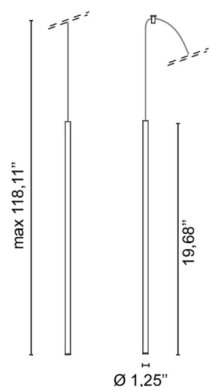
/XW 5,9W 969lm 17V 2700k CRI>90

Peso netto

1,98 lb



98,43 inch



ELEMENTI DI SISTEMA



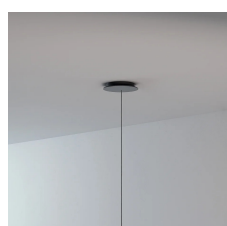
Plasterboard rosette without cable with ballast - 1 lamp

U0970

0,44 lb

.01  Bianco

.02  Nero



Round rosette diameter 20 cm complete with ballast - 1 Lamp

U0557/1

0,00 lb

.01  Bianco

.02  Nero



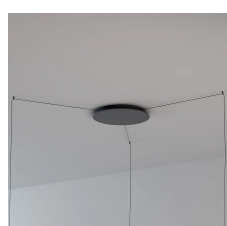
Round rosette diameter 20 cm complete with ballast - 2 Lamps

U0557/2

1,10 lb

.01  Bianco

.02  Nero



Round rosette diameter 38 cm complete with ballast - 3 Lamps

U0557/3

3,75 lb

.01  Bianco

.02  Nero



Round rosette diameter 38 cm complete with ballast - 4-6 Lamps

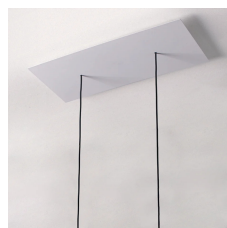
U0557/6

3,97 lb

.01  Bianco

.02  Nero





Rectangular rosette 48x24x3 cm complete with ballast - 2 Lamps

U0979/2

4,41 lb

.01 Bianco

.02 Nero



Round rosette diameter 35 cm complete with ballast - 3 Lamps

U0980/3

2,65 lb

.01 Bianco

.02 Nero



Round rosette diameter 45 cm complete with ballast - 5 Lamps

U0980/5

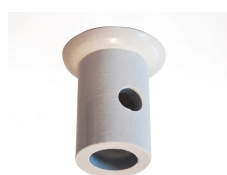
5,29 lb

.01 Bianco

.02 Nero



ACCESSORI



Deviatore decentratore

0612

0,07 lb

.01 Bianco

.02 Nero

