

# Newton System

Design ABS Studio



Codice **U1591**

Descrizione Sistema di lampade a sospensione con corpo in alluminio, COB LED a luce diretta e puntuale

Anno di produzione 2019

Tipologia sospensione, sistema,

Materiale alluminio

Emissione Luce *diretta*

Grado IP IP20

Allimentazione 350mA - 17Vdc

Finiture **.02** Nero

**.25** Dorato satinato

**.32** Nickel satinato

Sorgente luminosa **/W** 5,9W 1060lm 17V 4000K CRI>90

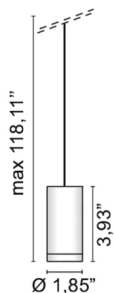
**/WW** 5,9W 1030lm 17V 3000K CRI>90

**/XW** 5,9W 969lm 17V 2700k CRI>90

Peso netto 1,10 lb



118,11 inch



## ELEMENTI DI SISTEMA



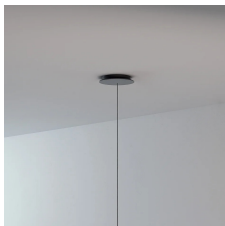
Plasterboard rosette without cable with ballast - 1 lamp

**U0970**

0,44 lb

.01 Bianco

.02 Nero



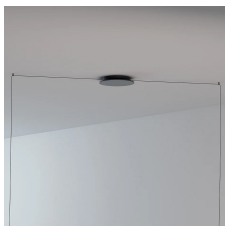
Round rosette diameter 20 cm complete with ballast - 1 Lamp

**U0557/1**

0,00 lb

.01 Bianco

.02 Nero



Round rosette diameter 20 cm complete with ballast - 2 Lamps

**U0557/2**

1,10 lb

.01 Bianco

.02 Nero



Round rosette diameter 38 cm complete with ballast - 3 Lamps

**U0557/3**

3,75 lb

.01 Bianco

.02 Nero



Round rosette diameter 38 cm complete with ballast - 4-6 Lamps

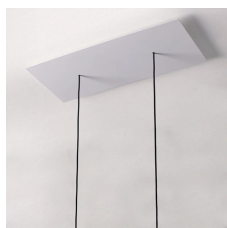
**U0557/6**

3,97 lb

.01 Bianco

.02 Nero





Rectangular rosette 48x24x3 cm complete with ballast - 2 Lamps

**U0979/2**

4,41 lb

.01 Bianco

.02 Nero



Round rosette diameter 35 cm complete with ballast - 3 Lamps

**U0980/3**

2,65 lb

.01 Bianco

.02 Nero



Round rosette diameter 45 cm complete with ballast - 5 Lamps

**U0980/5**

5,29 lb

.01 Bianco

.02 Nero



## ACCESSORI



**0547**

0,57 lb

.02 Nero



**0549**

0,22 lb

.02 Nero

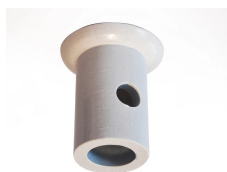
.25 Dorato satinato

.32 Nickel satinato

.02 Nero

.25 Dorato satinato

.32 Nickel satinato



Deviatore decentratore

**0612**

0,07 lb

**.02** ■ Nero

**.01** ■ Bianco

