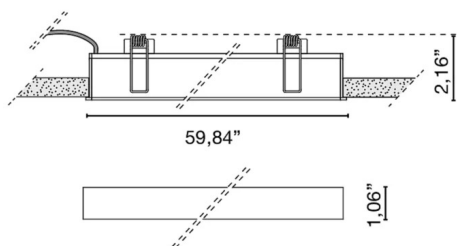




RECESSED CEILING WALL

Code	6616
Typology	recessed ceiling wall,
Allimentation	24Vdc
Finishes	.01 White
Light source	/W 22.5W 24V 4000K /WW 22.5W 24V 3000K /XW 22.5W 24V 2700k
Net weight	0,68 kg
	0,00 cm

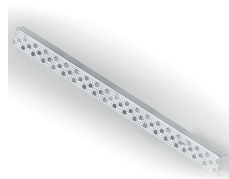


ELEMENTI DI SISTEMA

LINEA concrete formwork

0210

0,80 kg



Optional corner profile to facilitate installation in plasterboard	0242/100	0,10 kg
--	-----------------	---------

Optional corner profile to facilitate installation in plasterboard	0242/200	0,20 kg
--	-----------------	---------

Optional corner profile to facilitate installation in plasterboard	0242/300	0,30 kg
--	-----------------	---------

ACCESSORIES

	0155	0,06 kg
--	-------------	---------

	0156	0,13 kg
--	-------------	---------

	0157	0,29 kg
--	-------------	---------

Driver 24V - 60W	0160	0,29 kg
------------------	-------------	---------

	0161/100	0,34 kg
--	-----------------	---------

Dimmer 12/24V, PUSH - 1...10V - DALI Constant voltage dimmer 12/24/48V	0110/DIM .DIM DIM	0,10 kg
---	------------------------------------	---------

	0717/DIM60 .DIM DIM	0,17 kg
--	--------------------------------------	---------

	0717/DIM100 .DIM DIM	0,12 kg
--	---------------------------------------	---------

LED Emergency Unit LED Emergency Unit	0115/EM	0,43 kg
---------------------------------------	----------------	---------