
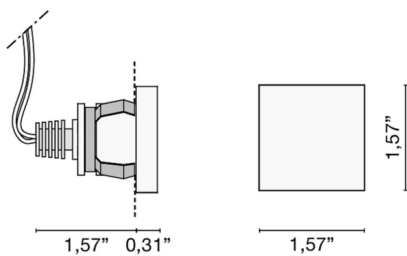


Codice	6355
Descrizione	Faretto da incasso (IP44) a luce diffusa con diffusore tondo in metacrilato satinato e verniciato.
Anno di produzione	2008
Tipologia	incasso plafone parete,
Materiale	metacrilato/alluminio
Emissione Luce	<i>diretta</i>
Grado IP	IP44
Allimentazione	350mA - 2,9Vdc
Finiture	.01  Bianco
Sorgente luminosa	/W 1W 158lm 4000K /WW 1W 150lm 3000K /XW 1W 143lm 2700k
Peso netto	0,09 lb
	7,87 inch
	1,18 inch

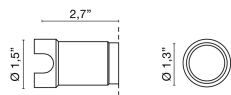


ACCESSORI

Controcassa in materiale plastico

0216

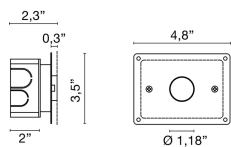
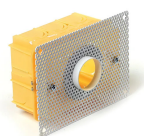
0,00 lb



Kit: box + plaster traforato

0213

0,00 lb



led driver in corrente continua 350mA

0128

0,00 lb



led driver dimmerabile multipower in corrente contiuna

0141/DIM

0,00 lb

.DIM  DIM

led driver dimmerabile DALI multipower in corrente contiuna

0141/DALI

0,00 lb

.DALI  DALI



led driver dimmerabile multipower in corrente contiuna

0145

0,00 lb



led driver dimmerabile DALI multipower in corrente contiuna

0145/DALI

0,00 lb

.PUSH PUSH

.1-10V  1-10V

.DALI  DALI

