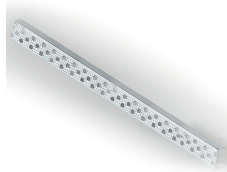




Codice	<b>6656</b>
Tipologia	incasso plafone parete,
Grado IP	40
Allimentazione	24Vdc
Finiture	<b>.01</b> Bianco
Sorgente luminosa	<b>/W</b> 27W 24V 4000K <b>/WW</b> 27W 24V 3000K <b>/XW</b> 27W 24V 2700k
Peso netto	1,50 kg

## ELEMENTI DI SISTEMA



Optional corner profile to facilitate installation in plasterboard **0242/100** 0,10 kg

Optional corner profile to facilitate installation in plasterboard **0242/300** 0,30 kg

Optional corner profile to facilitate installation in plasterboard **0242/200** 0,20 kg

## ACCESSORI

**0156** 0,13 kg

**0157** 0,29 kg

Driver 24V - 60W **0160** 0,29 kg

**0161/100** 0,34 kg

Dimmer 12/24V, PUSH - 1...10V - DALI Dimmer a tensione costante 12/24/48V **0110/DIM** 0,10 kg  
**.DIM** DIM

	<b>0717/DIM60</b> <b>.DIM</b> DIM	0,17 kg
	<b>0717/DIM100</b> <b>.DIM</b> DIM	0,12 kg
Unità di emergenza LED - Emergency Unit LED Emergency Unit	<b>0115/EM</b>	0,43 kg