

# Track 48V

Design officinadiarchitettura&design



Codice **U7341**

Descrizione Binario elettrificato a bassa tensione 48V per applicazioni a soffitto, a parete, a sospensione lunghezza 1mt

Anno di produzione 2019

Tipologia parete track sistema

Materiale alluminio

Emissione Luce *nn*

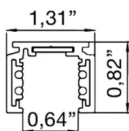
Grado IP 20

Allimentazione 48Vdc

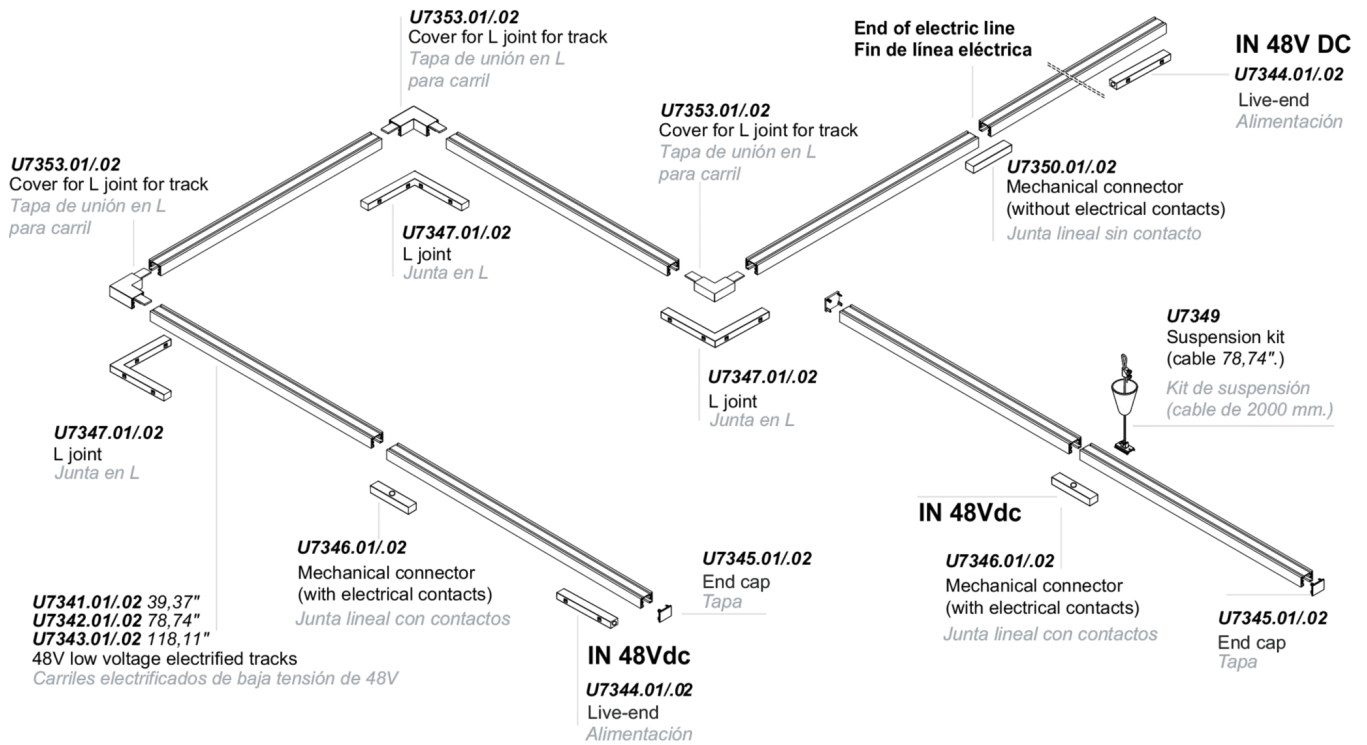
Finiture **.01**  Bianco  
**.02**  Nero

Sorgente luminosa

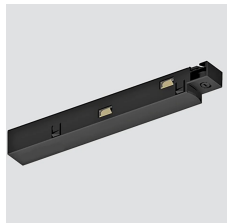
Peso netto 1,52 lb



## ESEMPIO DI CONFIGURAZIONE



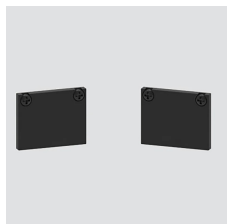
## ELEMENTI DI SISTEMA



Live end for track 48v

**U7344**

0,00 lb



End cap 1,06"

**U7345**

0,00 lb



Mechanical connector with electrical contacts

**U7346**

0,00 lb

# Track 48V



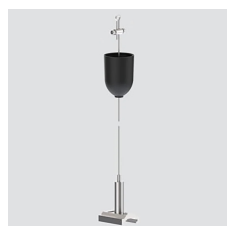
Design officinadiarchitettura&design



L joint for track 48v

**U7347**

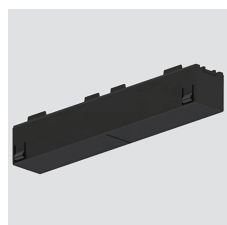
0,00 lb



Suspension kit for track 48v cable length 78,74"

**U7349**

0,00 lb



Mechanical connector without electrical contacts for track 48v

**U7350**

0,00 lb



Cover for L joint for track 48V

**U7353**

0,00 lb

## ACCESSORI

led driver a tensione costante 48V 60W

**U0160/48**

0,00 lb



led driver a tensione costante 48V 100W

**U0161/48**

0,00 lb



led driver a tensione costante 48V 120W

**U0162/48**

0,00 lb

