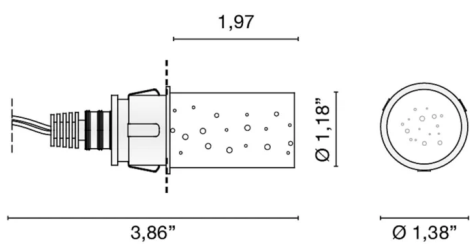




Code	<b>6340</b>
Description	Recessed spotlight (IP44) transparent methacrylate diffuser characterized by the presence of air bubbles inside. The flange is made of chrome-plated aluminum, the heat sink of anodized aluminum.
Year of production	2010
Typology	recessed ceiling wall
Material	methacrylate/aluminum
Light Emission	<i>live</i>
IP grade	40
Allimentation	350mA - 2,9Vdc
Finishes	<b>.00</b> Transparent
Light source	<b>/W</b> 1W 158lm 4000K <b>/WW</b> 1W 150lm 3000K <b>/XW</b> 1W 143lm 2700k
Net weight	0,18 lb
	7,87 inch
	1,18 inch

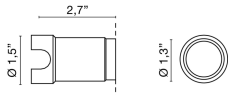


## ACCESSORIES

Plastic Plastic Box Plastic back case

**0216**

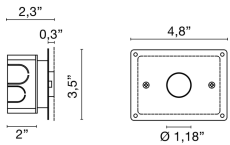
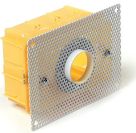
0,00 lb



Kit: box + perforated plaster Kit: box + perforated plaster  
Kit: box + perforated plaster

**0213**

0,00 lb



350 mA Driver 1-10 Spot led direct current driver 350mA

**0128**

0,00 lb



multipower dimmable led driver in contiunous current

**0141/DIM**

0,00 lb

**.DIM** DIM



dALI multipower continuous current dimmable led driver

**0141/DALI**

0,00 lb

**.DALI** DALI



multipower dimmable led driver in continuous current

**0145**

0,00 lb



dALI multipower continuous current dimmable led driver

**0145/DALI**

0,00 lb

**.DIM** 1-10V-PUSH

**.1-10V** 1-10V

**.DALI** DALI

