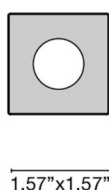
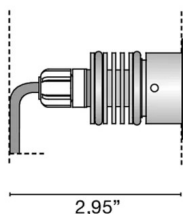




Code	<b>6349</b>
Description	IP67 walkable recessed spotlight with AISI 316L stainless steel square flange, aluminum heat sink and 30 cm neoprene cable.
Year of production	2008
Typology	recessed ceiling wall floor
Material	INOX AISI 316L
Light Emission	<i>live</i>
IP grade	67
Allimentation	500mA - 2,9Vdc
Finishes	<b>.33</b> Brushed steel
Light source	<b>/W</b> 1.5W 221lm 4000K <b>/WW</b> 1.5W 210lm 3000K <b>/XW</b> 1.5W 199lm 2700k
Net weight	0,22 lb
	11,81 inch
	1,26 inch

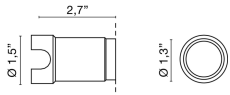


## ACCESSORIES

Plastic Plastic Box Plastic back case

**0216**

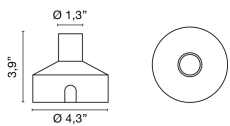
0,00 lb



Kit draining junction box + IP connector Kit draining junction box + IP connector Kit: Drainage formwork + IP connector

**0220**

0,00 lb



led direct current driver 500mA

**0127**

0,00 lb



led direct current driver 350mA

**0128**

0,00 lb



multipower dimmable led driver in continuous current

**0141/DIM**

0,00 lb

**.DIM** DIM



dALI multipower continuous current dimmable led driver

**0141/DALI**

0,00 lb

**.DALI** DALI



multipower dimmable led driver in continuous current

**0145**

0,00 lb



dALI multipower continuous current dimmable led driver

**0145/DALI**

0,00 lb

**.DIM** 1-10V-PUSH

**.1-10V** 1-10V

**.DALI** DALI

