



 TECHO EMPOTRADO PARED

Código **6615**

Tipología techo empotrado pared,

Grado IP 40

Alimentación 24Vdc

Acabados **.01**  Blanco

Fuente de luz
/W 15W 1840lm 24V 4000K CRI>90
/WW 15W 1650lm 24V 3000K CRI>90
/XW 15W 1560lm 24V 2700k CRI>90

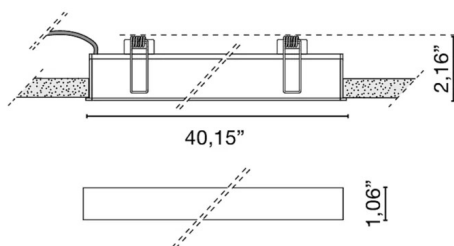
Peso neto 0,50 kg



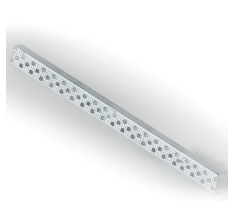
30 cm



0,00 cm



ELEMENTI DI SISTEMA



Optional corner profile to facilitate installation in plasterboard	0242/100	0,10 kg
--	-----------------	---------

Optional corner profile to facilitate installation in plasterboard	0242/200	0,20 kg
--	-----------------	---------

Optional corner profile to facilitate installation in plasterboard	0242/300	0,30 kg
--	-----------------	---------

LINEA concrete formwork	0210	0,80 kg
-------------------------	-------------	---------

ACCESORIOS

	0156	0,13 kg
--	-------------	---------

	0157	0,29 kg
--	-------------	---------

Driver 24V - 60W	0160	0,29 kg
------------------	-------------	---------

	0161/100	0,34 kg
--	-----------------	---------

Dimmer 12/24V, PUSH - 1...10V - DALI Regulador de tensión constante 12/24/48V	0110/DIM .DIM DIM	0,10 kg
---	------------------------------------	---------

	0717/DIM60 .DIM DIM	0,17 kg
--	--------------------------------------	---------

	0717/DIM100 .DIM DIM	0,12 kg
--	---------------------------------------	---------

Unidad de emergencia LED Unidad de emergencia LED	0115/EM	0,43 kg
---	----------------	---------

	0155	0,06 kg
--	-------------	---------