

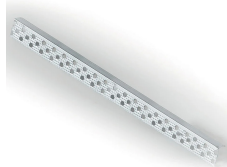


INCASSO PLAFONE PARETE

Codice	6655
Tipologia	incasso plafone parete,
Grado IP	40
Allimentazione	24Vdc
Finiture	.01 Bianco
Sorgente luminosa	/W 18W 2260lm 24V 4000K CRI>90 /WW 18W 2020lm 24V 3000K CRI>90 /XW 18W 1890lm 24V 2700k CRI>90
Peso netto	1,00 kg
	30 cm
	0,00 cm



ELEMENTI DI SISTEMA

Optional corner profile to facilitate installation in plasterboard	0242/300	0,30 kg
Optional corner profile to facilitate installation in plasterboard	0242/100	0,10 kg
Optional corner profile to facilitate installation in plasterboard	0242/200	0,20 kg



ACCESSORI

	0156	0,13 kg
	0157	0,29 kg
Driver 24V - 60W	0160	0,29 kg
	0161/100	0,34 kg
Dimmer 12/24V, PUSH - 1...10V - DALI Dimmer a tensione costante 12/24/48V	0110/DIM .DIM DIM	0,10 kg

	0717/DIM60 .DIM  DIM	0,17 kg
	0717/DIM100 .DIM  DIM	0,12 kg
Unità di emergenza LED - Emergency Unit LED Emergency Unit	0115/EM	0,43 kg