

Newton System

Design ABS Studio



| | |
|--------------------|---|
| Code | U1592 |
| Description | Suspension lamp system with aluminum body, COB LED direct and point light |
| Year of production | 2019 |
| Typology | suspension, system, |
| Material | aluminium |
| Light Emission | <i>live</i> |
| IP grade | IP20 |
| Allimentation | 350mA - 17Vdc |
| Finishes | .02 Black .25 Satin gold .32 Satin nickel |
| Light source | /W 5,9W 1060lm 17V 4000K CRI>90 /WW 5,9W 1030lm 17V 3000K CRI>90 /XW 5,9W 969lm 17V 2700k CRI>90 |
| Net weight | 1,54 lb |
| | 393,70 inch |



ELEMENTI DI SISTEMA



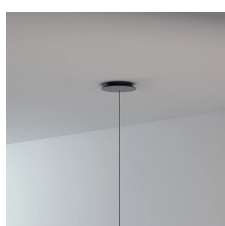
Plasterboard rosette without cable with ballast - 1 lamp

U0970

0,44 lb

.01 White

.02 Black



Round rosette diameter 20 cm complete with ballast - 1 Lamp

U0557/1

0,00 lb

.01 White

.02 Black



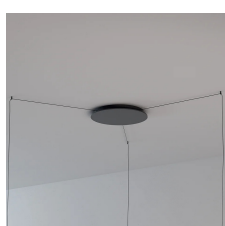
Round rosette diameter 20 cm complete with ballast - 2 Lamps

U0557/2

1,10 lb

.01 White

.02 Black



Round rosette diameter 38 cm complete with ballast - 3 Lamps

U0557/3

3,75 lb

.01 White

.02 Black



Round rosette diameter 38 cm complete with ballast - 4-6 Lamps

U0557/6

3,97 lb

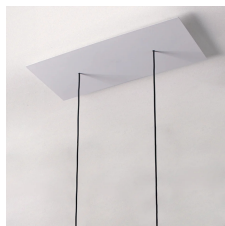
.01 White

.02 Black



Newton System

Design ABS Studio



Rectangular rosette 48x24x3 cm complete with ballast - 2 Lamps

U0979/2

4,41 lb

.01  White

.02  Black



Round rosette diameter 35 cm complete with ballast - 3 Lamps

U0980/3

2,65 lb

.01  White

.02  Black



Round rosette diameter 45 cm complete with ballast - 5 Lamps

U0980/5

5,29 lb

.01  White

.02  Black



ACCESSORIES



0547

0,57 lb

.02  Black




0549


0,22 lb


.02  Black

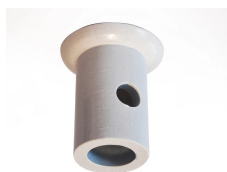
.25  Satin gold

.32  Satin nickel

.02  Black

.25  Satin gold

.32  Satin nickel



Decentralizing diverter

0612

0,07 lb

.02  Black

.01  White

